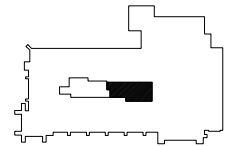
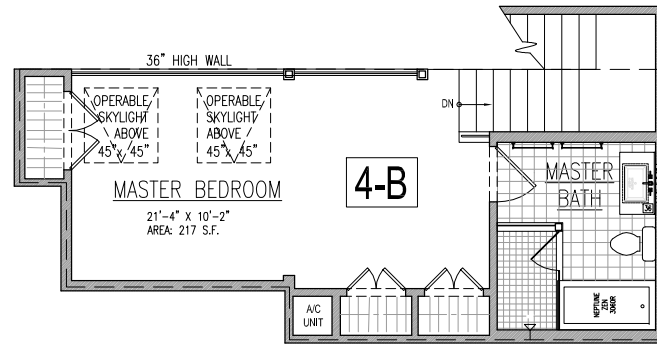
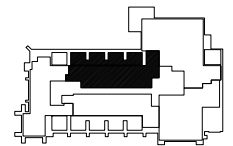
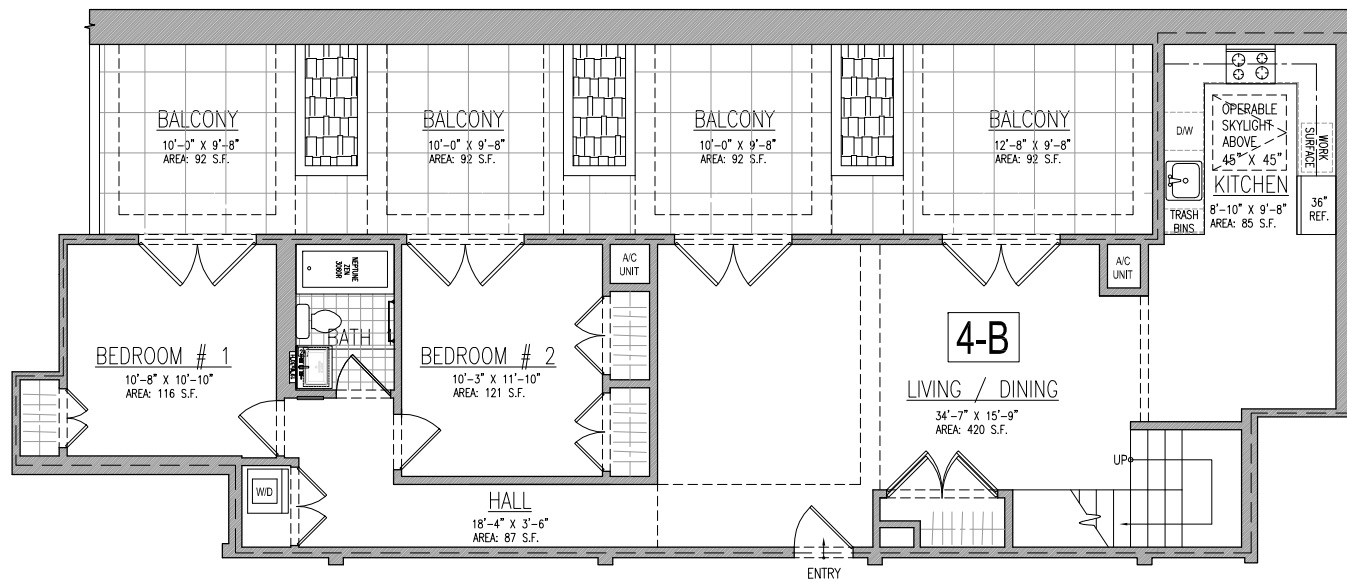


APT. 4-B  
GROSS: 1,490 SQ.FT.

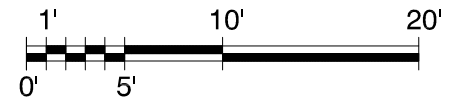
3 BED  
2 BATH  
4 BALCONIES



MEZZANINE FLOOR: 400 SQ.FT. - KEY PLAN



FOURTH FLOOR: 1,090 SQ.FT. - KEY PLAN



**BAXT**  
**INGUI**  
Architects PC © 2008

20 Vesey Street Suite 900  
New York, New York 10007  
T. 212.233.6740 F. 212.962.5126

PROJECT:  
THE LANDMARK CONDOMINIUM  
58 Strong Place Brooklyn, N.Y. 11231

TITLE: APARTMENT 4 - B

PAGE:  
**28**

DATE: 2010-07-02

DRAWN BY: SK

CHECKED BY: MI

ALL AREAS AND DIMENSIONS ARE APPROXIMATE AND ARE SUBJECT TO NORMAL CONSTRUCTION TOLERANCES AND VARIANCES.  
DIMENSIONS ARE MAXIMUM OVERALL. SPONSOR RESERVES THE RIGHT TO MAKE CHANGES IN ACCORDANCE WITH OFFERING PLAN.